

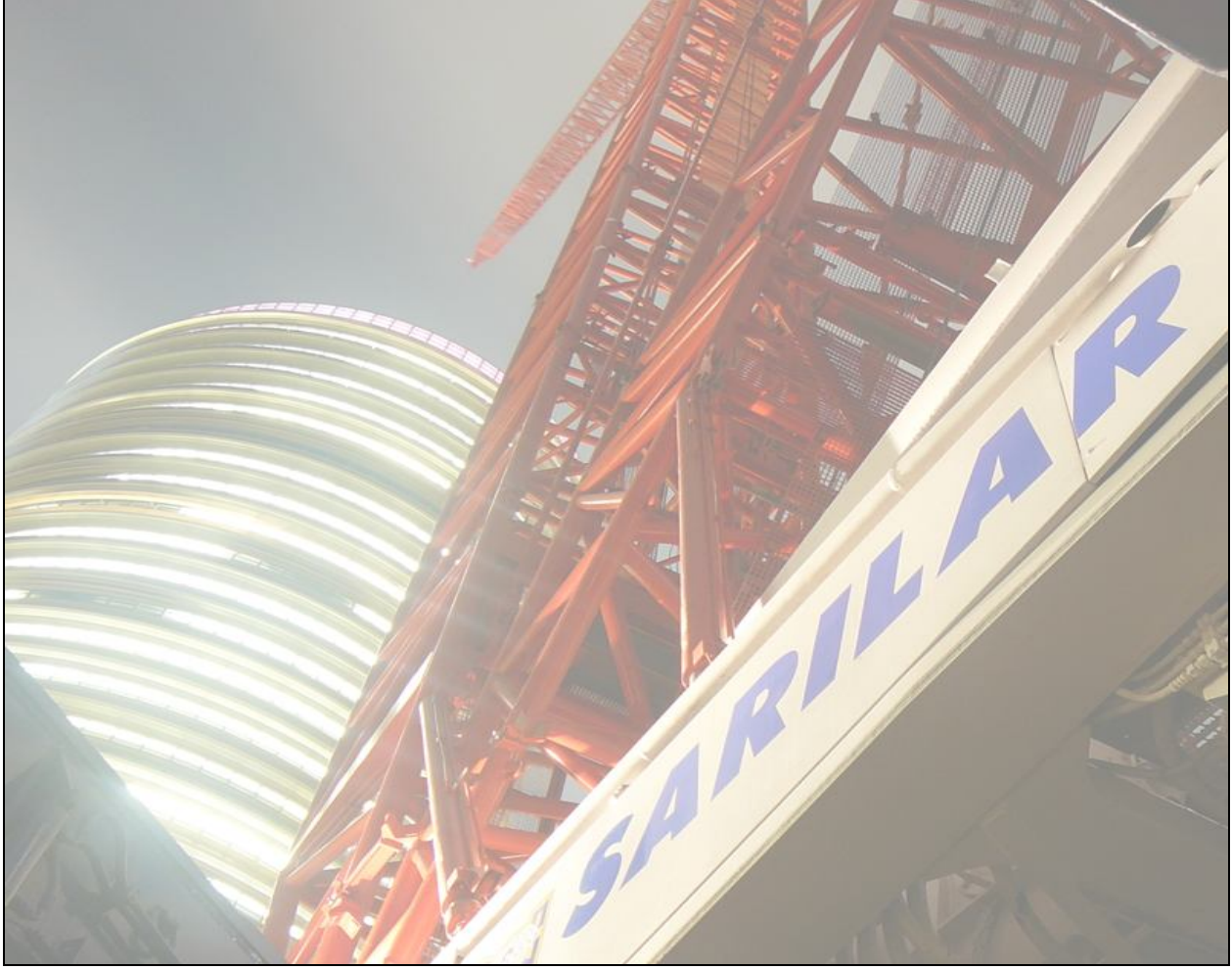
SARILAR

ULUSLARARASI NAKLIYAT İTH. İHR. LTD. ŞTİ.
INTERNATIONAL TRANSPORT & COMMERCE



GÜRBÜZ

İŞ MAKİNALARI TİCARET LTD. ŞTİ.
CONSTRUCTION MACHINERY TRADING



ROUTE REPORT

PROJECT	----- CONCRETE TOWERS	PROJECT MANAGER
ASSESSMENT DATE	09.03.2009	SERKAN ASLAN
SITE	-----/MANISA	
PREPARED BY	İlkay KINACI Ömer BAYRAM	
PREPARED FOR	-----	

ISO 9001
ISO 14001
OHSAS 18001
BUREAU VERITAS
Certification

N°30330 N°30331 N°30332

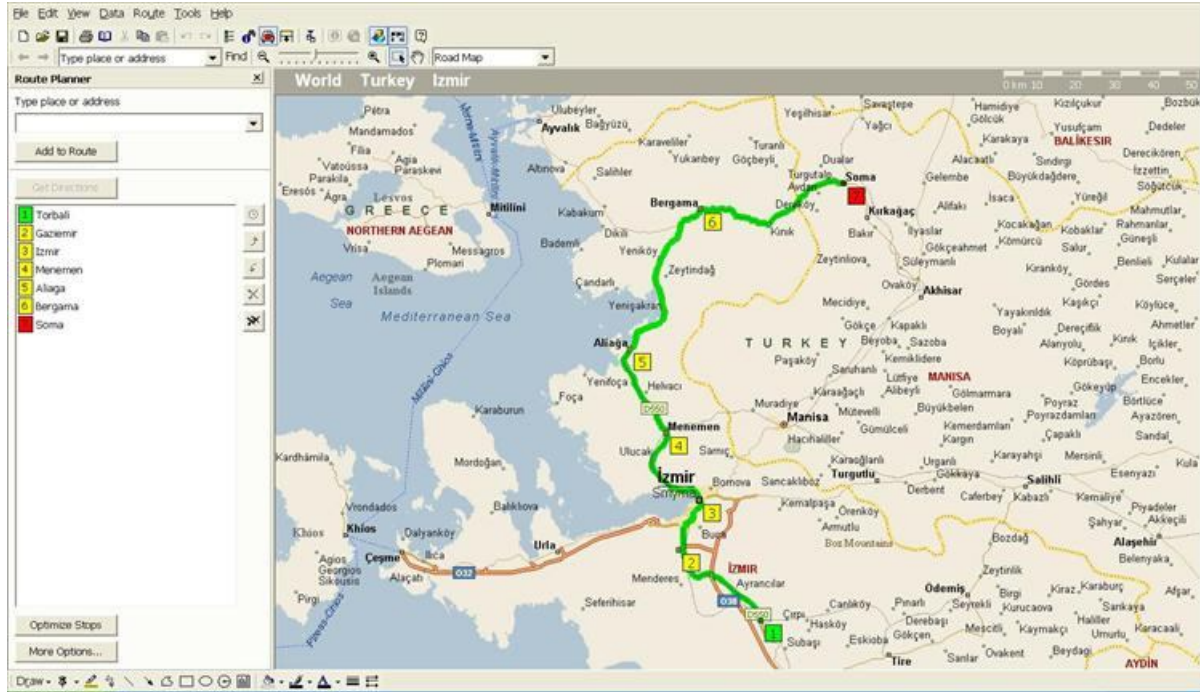


Index.....	2
1. Route Descriptions	3
1.1. Main Route Descriptions	3
1-1.1. Torbalı-Izmir Route	4
1-1.2. Izmir-Menemen Route	9
1-1.3. Menemen-Aliaga Route	11
1-1.4. Aliaga Bergama Route	14
1-1.5. Bergama-Soma Route	18
1.2. Alternative Route Descriptions	24
2. Main Route Detailed Descriptions	25
3. Results	137

1- ROUTE DESCRIPTIONS

Concrete tower transportation start on Arkas factory loading area and it will be end at ----- site storage ara. There are two road for transportation which are main road and alternative road

1.1 Main Route Description and Details

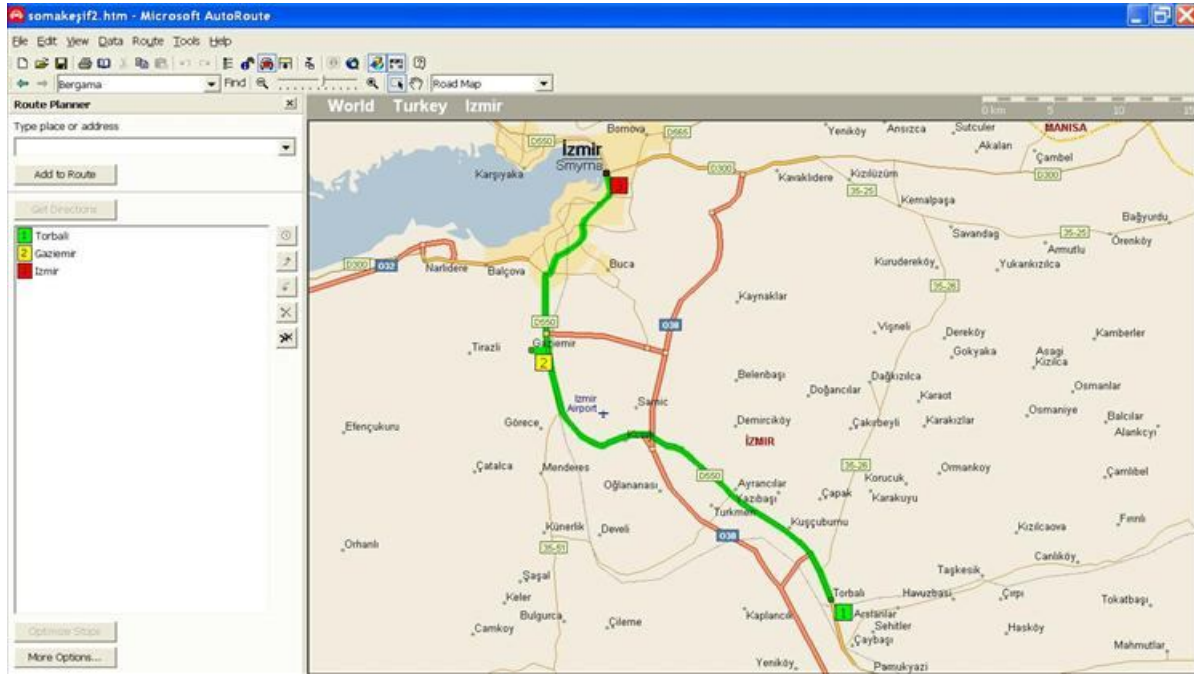


MAIN ROUTE		
TOWN	ROAD NUMBER	DESTINATION
Torbalı	35-28	Izmir-Aydın Main Roadway
Kuscuburnu	D-550	
Avrancılar	D-550	
Yeşilköy	D-550	
Kışık	D-550/35-51	
Gaziemir	35-51	
Karabağlar	35-51	
İzmir	35-51	
Karşıyaka	35-51/D-550	
Çiğli	D-550	
Uukent	D-550	
Egekent	D-550	
Menemen	D-550	
Buruncuk	D-550	
Helvacı	D-550	
Aliağa	D-550	

Yenişakran	D-550	
Kurfal›	D-550	Entrance to road D-240
Bergama	D-240	
K›nk	D-240	
Cenk Yeri	D-240	
Avdan	D-240	
Soma	D-240	Entrance to Site

For main road ; you can see detailed Descriptions for critical points on detailed maps and pictures.

1-1.1 Torbali-İzmir Route :





1	Arkas Factory and Loading area	pic.1, 2,3,4
2	Bridge	pic.5
3	Turn left	pic.6
4	Turn right	pic.7
5	Izmir -Aydın Road sign	pic.8
6	Highway Bridge	pic.9



7	Bridge Crossing
---	-----------------



8	Ayrancılar town 2 traffic signals	pic.10., 11
9	Bridge Crossing	pic.12
10	Subway passing under highway bridge.	pic.13



11	Subway passing under highway bridge.	Pic. 14
12	Traffic signals	Pic. 15
13	Bridge crossing	Pic. 16
14	Menderes-İzmir road signal	Pic. 17



15	Road sign	Pic.18
16	Subway	Pic.19
17	Subway .	Pic.20,21, 22,23
18	Traffçc signals on bypass	
19	Road sign	
20	Subway and bypass	
21	Traffic Signals	Pic.25
22	Road sign and footbridge	Pic.26 Pic.27



23	Turn left	
24	Bridge	Pic.29
25	Road sign and footbridge	Pic.30
26	Traffic signals	Pic.31
27	Traffic signals	Pic.32
28	Traffic signals	Pic.33
29	Traffic signals	Pic.34
30	Road sign	Pic.35
31	Traffic signals	Pic.36
32	Traffic signals	Pic.37
33	Traffic signals	Pic.38
34	Footbridge	Pic.39

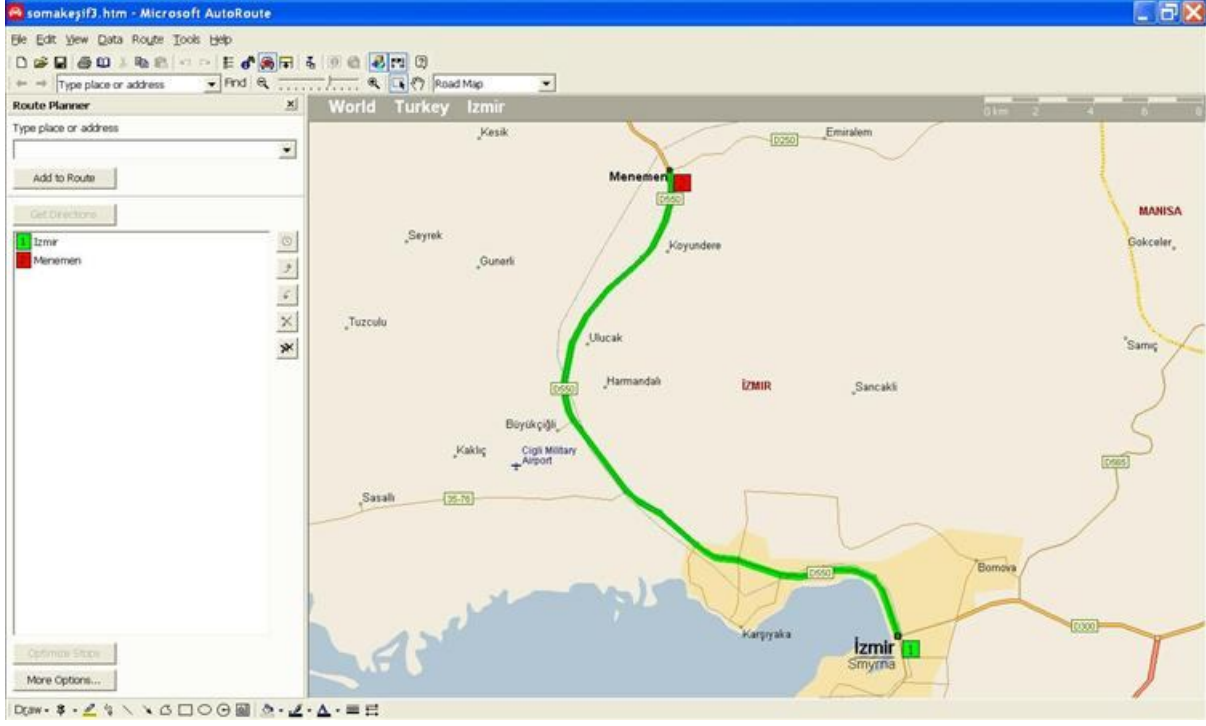


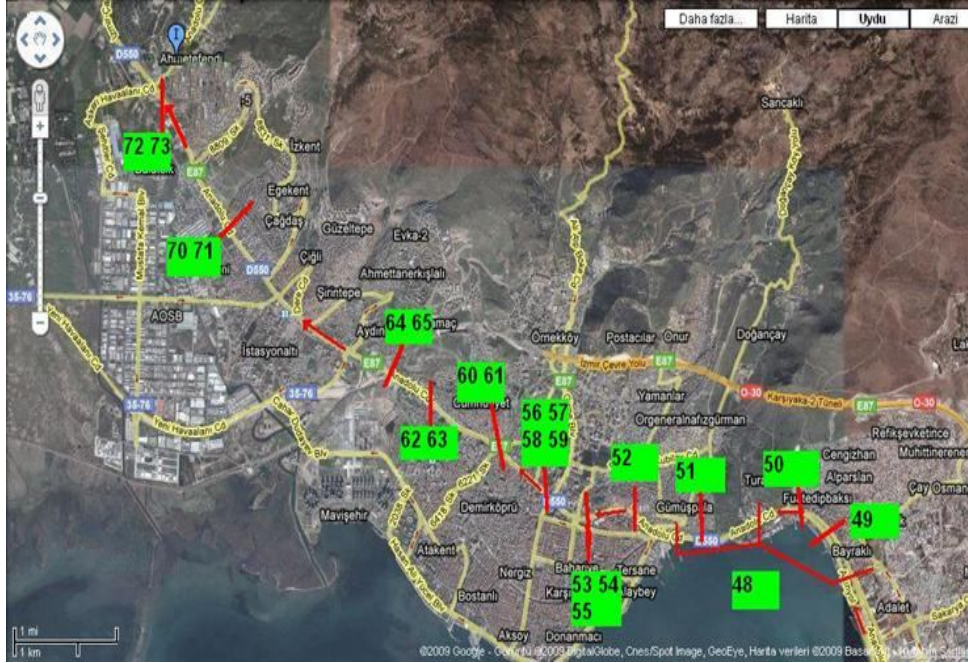
35	Road sign and footbridge	Pic.40
36	Subway passing under highway	Pic.41
37	Footbridge	Pic.42
38	Footbridge	Pic.43
39	Road sign and footbridge	Pic.44
40	Footbridge	Pic.44
41		
42	Viaduct crossing	Pic.46
43	Subway under highway bridge.	Pic.47
44	Road sign.	Pic.48



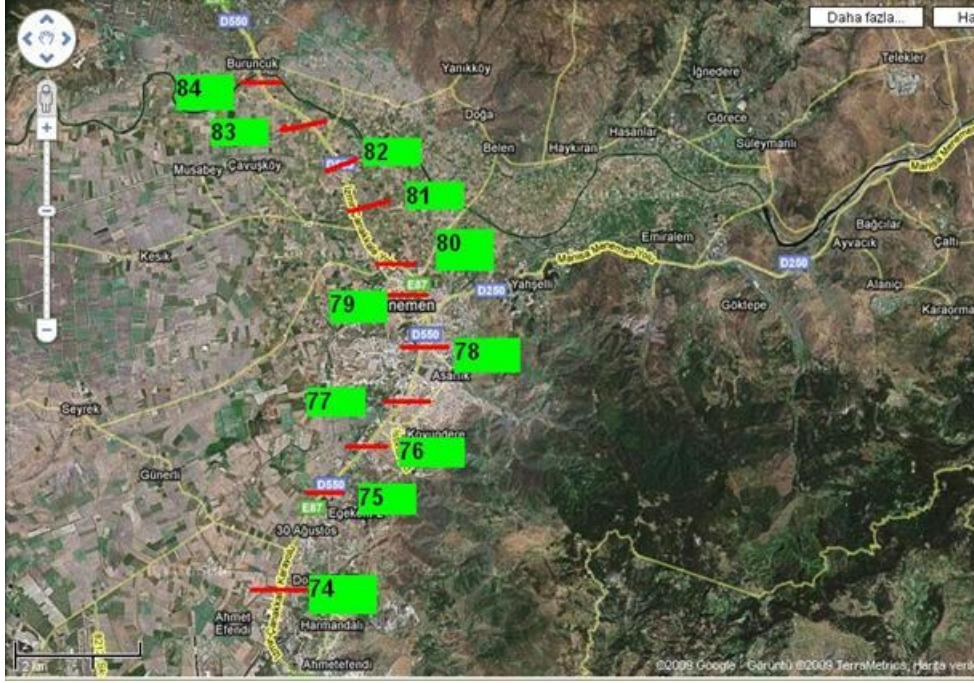
45	Turn right to accessing Karşıyaka district	Pic.49
46	Subway under highway bridge.	Pic.50
47	Subway under highway bridge.	Pic.51

1-1.2 İzmir-Menemen Route:



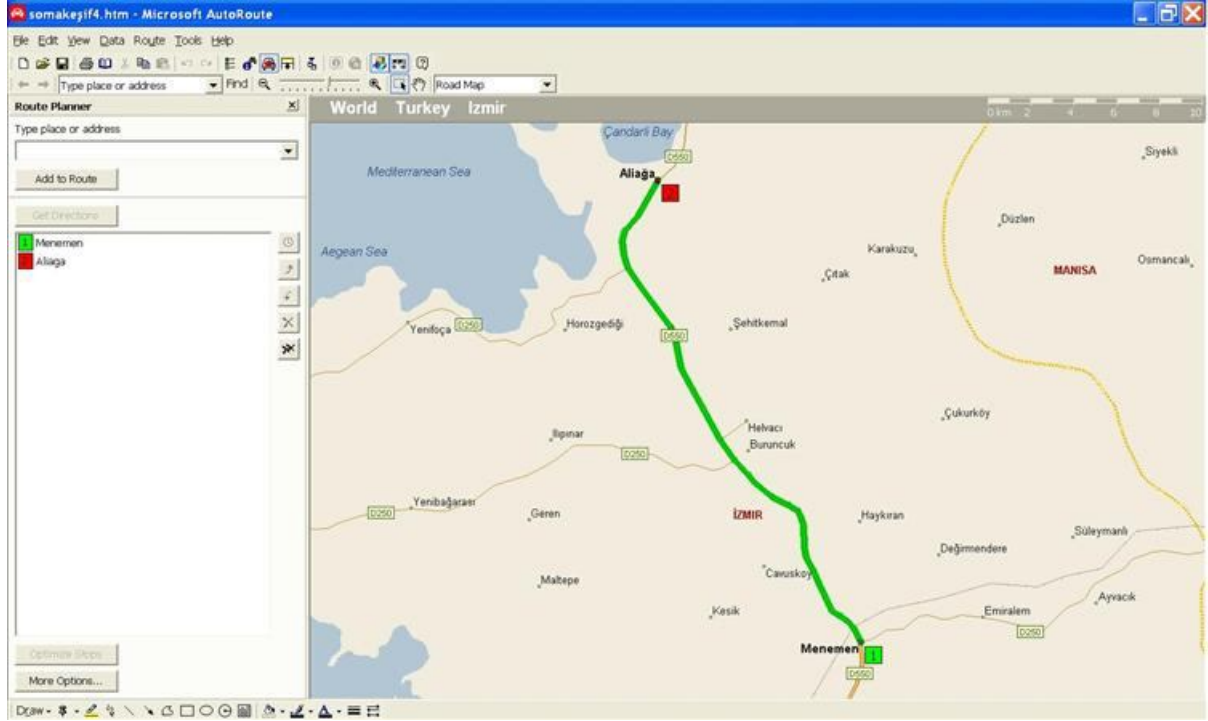


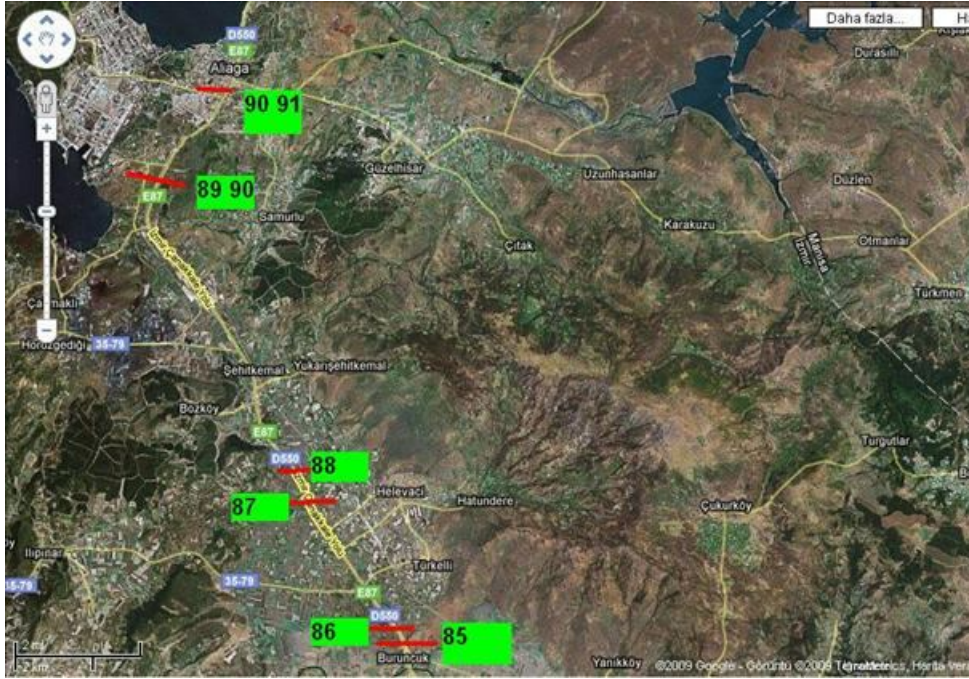
48	Coastal road	Pic.52
49	Footbridge	Pic.53
50	Bridge crossing	Pic.54
51	Footbridge	Pic.55
52	Karşıyaka road sign	Pic.56
53	Subway under passing highway bridge	Pic.57
54	Footbridge	Pic.58
55	Footbridge	Pic.59
56	Traffic signals	Pic.60
57	Subway under highway bridge	Pic.61
58	Traffic signals.	Pic.62
59	Traffic signals.	Pic.63
60	Traffic signals	Pic.64
61	Traffic signals	Pic.65
62	Road sign	Pic.66
63	Move left	Pic.67
64	Subway under passing highway bridge	Pic.68
65	Road sign and Footbridge	Pic.69
66	Bypass road and Subway	Pic.70
67		Pic.71
68		Pic.72
69		Pic.74
70	Footbridge	Pic.74
71	Footbridge	Pic.75
72	Road sign	Pic.76



74	Traffic sign	
75	Footbridge	Pic:78
76	Traffic signals	Pic.79
77	Traffic signals	Pic.80
78	Menemen district	
79	Bridge	Pic.81
80	Road sign Aliğa- Çanakkale	Pic.82
81	Footbridge	Pic.83
82	Traffic signal	Pic.84
83	Road signal	Pic.85
84	Buruncuk	

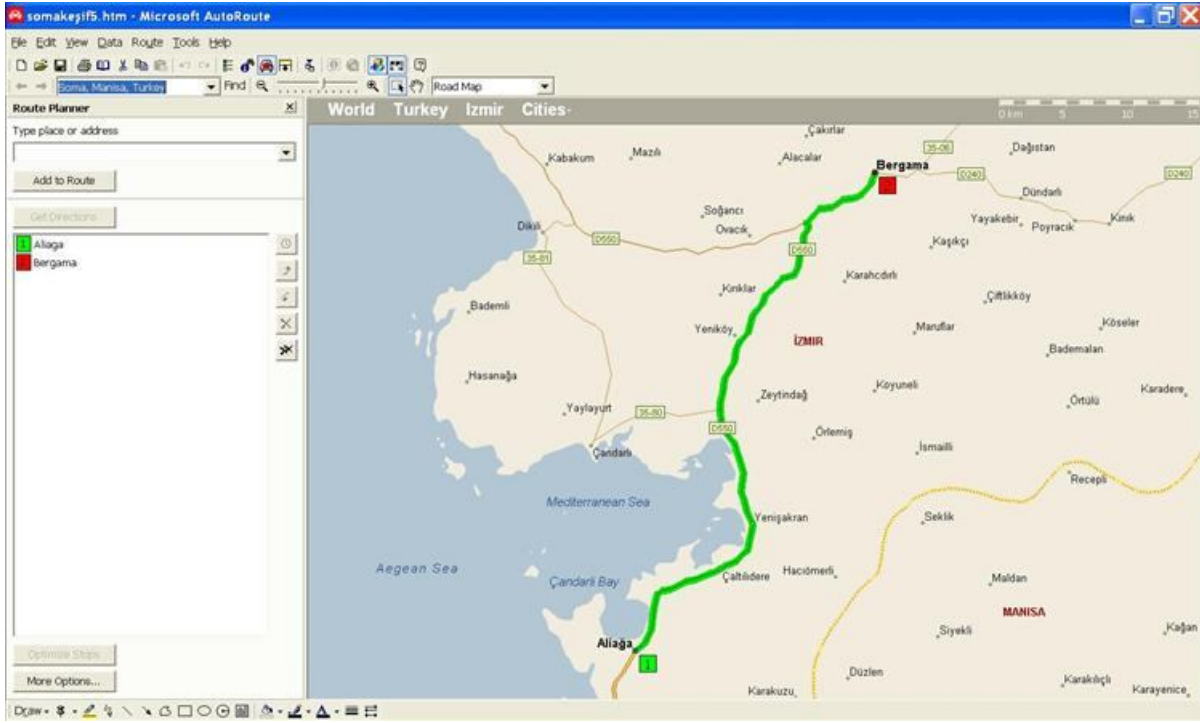
1-1.3. Menemen-Aliğa Route





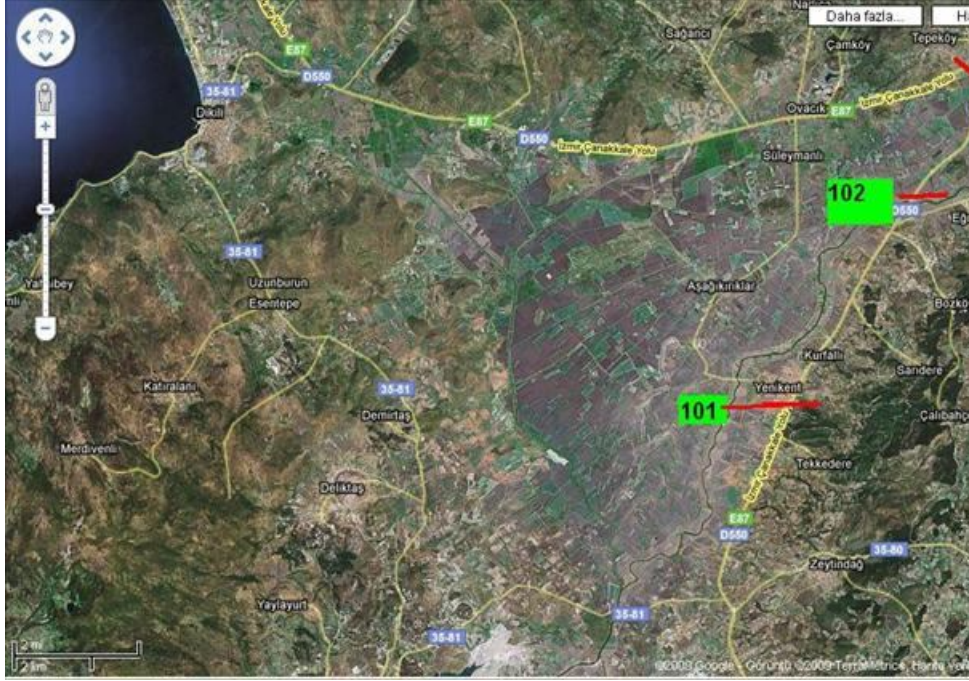
85	Road sign	Pic.86
86	Traffic sign	Pic.87
87	Traffic sign	
88	Traffic sign	Pic.88
89	Traffic sign	
90	Traffic sign	
91	Traffic sign	

1-1.4 Aliğa-Bergama Route





92	Traffic sign	
93	Traffic sign	
94	Traffic sign	
95	Bridge	
96	Çaltıkdere	
97	Yenişakran	
98	Traffic sign	
99	Traffic sign	
100	Traffic sign	

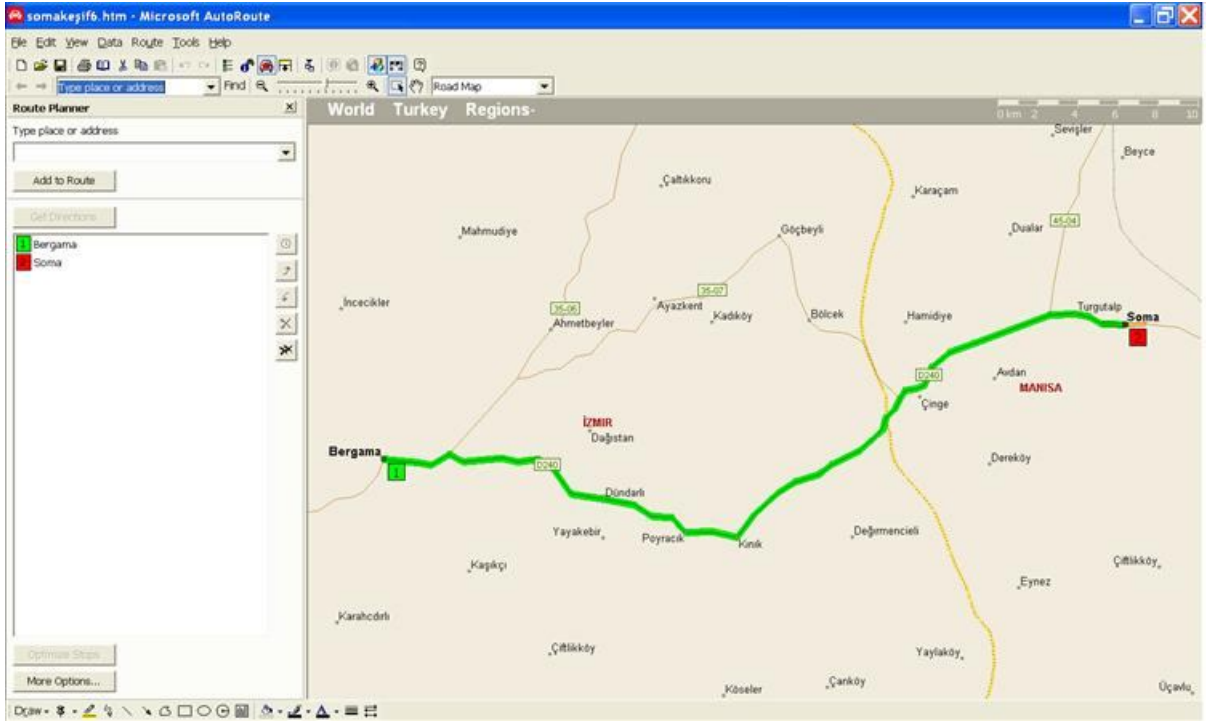


101	Yenikent	
102	Road sign	Ptc.96 Bergama road sign



103	Bergama intersection	Pic.97
104	Traffic signals	Pic.98
105	Bergama	Pic.99
106	Bergama sign	Pic.100
107	Traffic signals and turn to right	Pic.101
108	Traffic signal	Pic.102
109	Traffic signal	Pic.103
110	traffic signal	Pic.104
111	Traffic sign	
112	Bridge	Pic.105
113	Narrow road since bridge crossing	Pic.106
114	Rridge crossing	Pic.107
115	Bergama	
116	Koyundere bridge	
117	Bakırçay2 bridge	

1-1.5 Bergama-Soma Route





118	Karadere bridge	
119	Narrow road	
120	Bridge crossing	Pic.109
121	Junction	
122	Entrance to Cenkyeri	
123	Exit from Cenkyeri	
124	Entrance Avdan	
125	Road construction	Pic.110
126	Soma	Pic.111
127	Traffic signals	Pic.112
128	Traffic signal	
129	Turn Right	Pic.113
130	Traffic signals	Pic.114
131	trafik signals	Pic.115
132	Energy plant next to left to Accessing site area	Pic.116



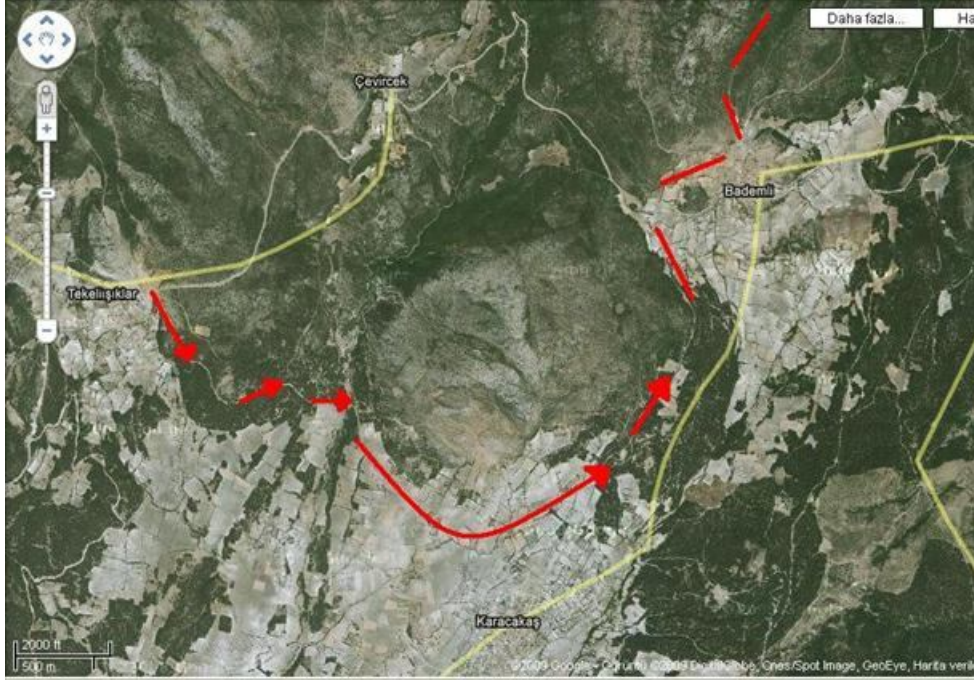
Entrance to ----- Site



Entrance to ----- Site

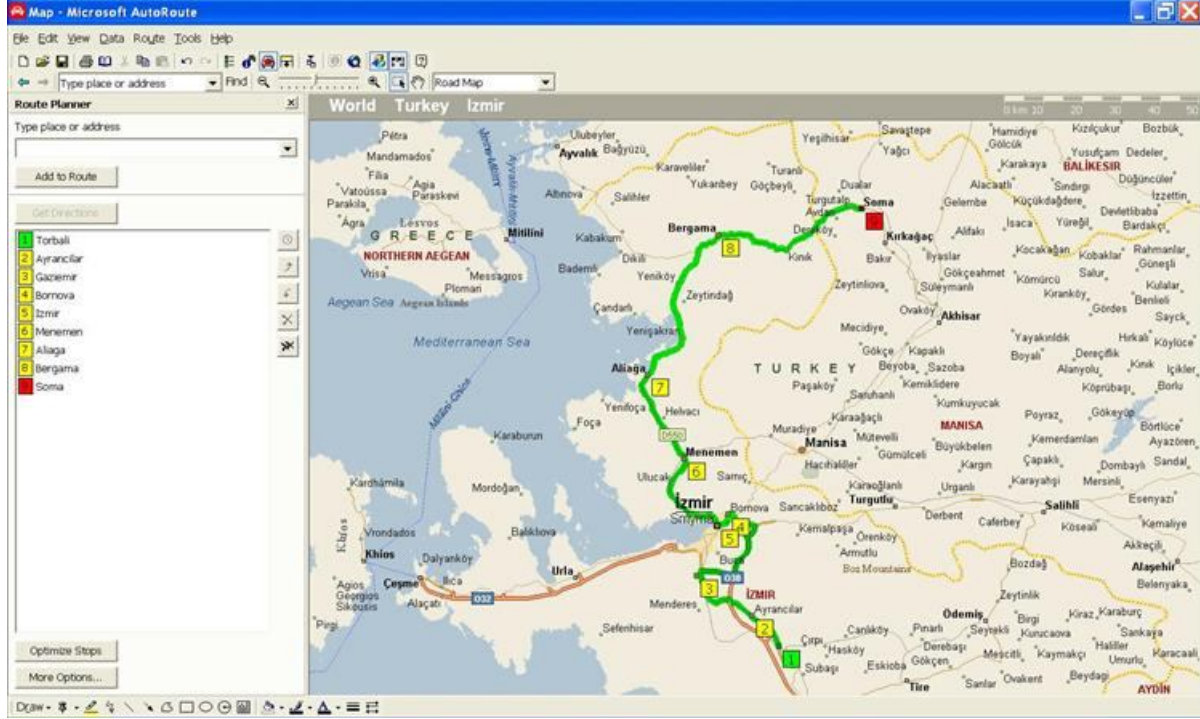


Entrance to ----- Site



Entrance to ----- Site

1-2 Alternative Route



ALTERNATIVE ROUTE		
TOWN	ROAD NUMBER	
Torbalı	35-28	
Kuşçuburnu	D-550	
Avrancılar	D-550	
Yeşilköy	D-550	
Kınık	D-550/35-51	
Gaziemir	35-51	
Bornova	D-300	
Karşıyka	D-300/D-550	
Menemen	D-550	
Buruncuk	D-550	
Helvacı	D-550	
Aliağa	D-550	
Yenişakran	D-550	
Kurfalı	D-550	Entrance to road D-240
Bergama	D-240	
Kınık	D-240	
Cenk yeri	D-240	
Avdan	D-240	
Soma	D-240	

2. MAIN ROAD DETAILED DESCRIPTIONS



Pic.1: Arkas loading area.
 Pic.2: Narrow road in front of Arkas factory.
 Pic.3: Arkas factory
 Pic.4 : Narrow road between arkas factory to bridge.

pic. Num.	Kilometer(Km)	Description	height (m)	width (m)	length (m)
pic.1,2,3,4	0	Arkas factory and Loading area and Narrow road		6	

Note: Kilometer(Km) values is calculated for Arkas Factory/Torbali which is starting point.



Pic.5: Bridge near the Arkas factory
 -Capacity of Bridge: 45 t/axle

pic. Num.	Kilometer(Km)	Description	height (m)	width (m)	length (m)
pic.5	2,2	Bridge		5	25



Pic.6: Turn right to access main torbalı İzmir road.
 -Road number is 35-28

pic. Num.	Kilometer(Km)	Description	height (m)	width (m)	length (m)
pic.6	4,1	Road		8 m	



Pic.7: Turn right to access main Torbalı İzmir road. Road number is D-550

pic. Num.	Kilometer(Km)	Description	height (m)	width (m)	length (m)
pic.7	5,3	Road		10m	



Pic. 8: Road sign height (m) is 6,3 meter.
 -Follow İzmir road D-550

pic. Num.	Kilometer(Km)	Description	height (m)	width (m)	length (m)
pic.8	7,8	İzmir-Aydın Road sign	6,3	10	



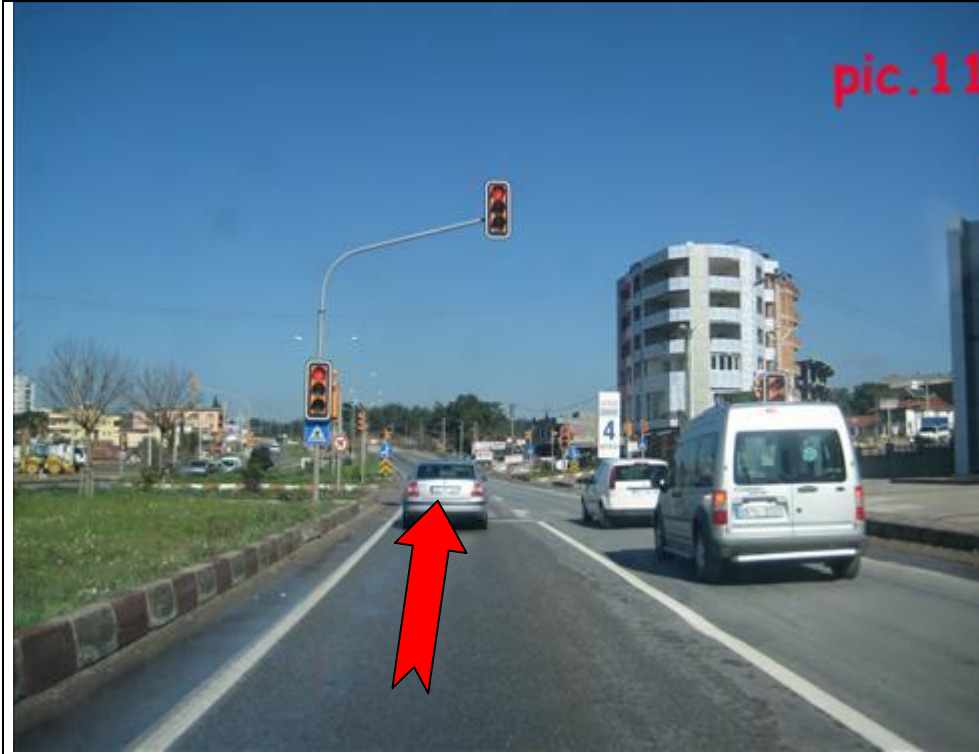
Pic.9 : Highway bridge. Height (m) is aprox. 5,2 meter.
 -D-550

pic. Num.	Kilometer(Km)	Description	height (m)	width (m)	length (m)
pic.9	9	Highway bridge.	5,2	15	

pic.10



Pic.10: Traffic signals in Ayrancılar Town.



Pic.11: Traffic signals in Ayrancılar town.

pic. Num.	Kilometer(Km)	Description	height (m)	width (m)	length (m)
pic.10.11	15,2	Ayrancılar town 2 traffic light	6,5		



Pic.12: Bridge crossing.
 Width 10 meters
 -Length (m) : 20 meters
 -Capacity of Bridge: 520t

pic. Num.	Kilometer(Km)	Description	height (m)	width (m)	length (m)
pic.12	19	Bridge crossing		10	20

pic.13



Pic.13 : Subway passing under highway bridge.
 -Follow the İzmir road D-550

pic. Num.	Kilometer(Km)	Description	height (m)	width (m)	length (m)
pic.13	22	Subway passing under highway bridge.	5,2	13	



Pic. 14: Subway passing under highway bridge.

pic. Num.	Kilometer(Km)	Description	height (m)	width (m)	length (m)
Pic. 14	22,3	Bridge	5,2	12	



Pic.15: Traffic signals.
 -Follow the İzmir road 35-51

pic. Num.	Kilometer(Km)	Description	height (m)	width (m)	length (m)
Pic.15	24,5	Traffic signals	6		



Pic.16: Bridge crossing
 Bridge dimension

-Lifting capacity: 600 t

-Road number 35-51

pic. Num.	Kilometer(Km)	Description	height (m)	width (m)	length (m)
Pic.16	28	Bridge		10	20

pic.17



Pic.17: Road signals
 - Follow the İzmir- Menderes road 35-51

pic. Num.	Kilometer(Km)	Description	height (m)	width (m)	length (m)
Pic.17	31,5	Road signal	6		



Pic.18 : road sign

-Follow the Karabağlar İzmir road 35-51

pic. Num.	Kilometer(Km)	Description	height (m)	width (m)	length (m)
Pic.18	33,5	Road sign	6	12	



Pic.19: Subway and by pass road on 35-51 road

-Alternative road by pass: Width (m): 5m

Both of subway and bypass way can be use for transportation. Which way will be use can be chosen due to road conditions.

pic. Num.	Kilometer(Km)	Description	height (m)	width (m)	length (m)
Pic.19	34,7	Subway	5	7	20



Pic.20:Bypass way
 Pic.21: Traffic lights on bypass way
 Pic.22: Other traffic lights on bypass way
 Pic.23: Entrance to other bypass way.

Subway height is 5 meter.

Both of subway and bypass road can be use for transportation.
 Which way will be use can be chosen due to road conditions.

pic. Num.	Kilometer(Km)	Description	height (m)	width (m)	length (m)
Pic.20,21,	35	Subway bypass	5	7	15
22,23	35	Lights			



Pic.25: Bypass way
 Pic.26: Traffic lights
 Pic.27 : Road sign and footbridge

-Subway Height is 5 meter.

Both of subway and bypass road can be use for transportation. Which way will be use can be chosen due to road conditions.

pic. Num.	Kilometer(Km)	Description	height (m)	width (m)	length (m)
	36	Bypass road		5	
Pic.25	36,4	Traffic light			
Pic.26		Road sign and footbridge			
Pic.27	37		5,5	12	



Pic.28: Follow road 35-81

pic. Num.	Kilometer(Km)	Description	height (m)	width (m)	length (m)
pic.28	37,5	Turn left			

pic. 29



Pic.29: Bridge
 -Follow the road 35-51

pic. Num.	Kilometer(Km)	Description	height (m)	width (m)	length (m)
Pic.29	37,7	Bridge	6		



Pic.30 : Road sign and footbridge.

-Follow the road 35-51

pic. Num.	Kilometer(Km)	Description	height (m)	width (m)	length (m)
Pic.30	38,2	Road sign	6		
Pic.30	38,2	Footbridge	5,5		



Pic.31 Traffic signal on road 35-51



Pic.32: Traffic signal on road 35-51



Pic.33: Traffic signal on road 35-51



Pic.34: Traffic signal on road 35-51

pic. Num.	Kilometer(Km)	Description	height (m)	width (m)	length (m)
Pic.31	38,9	traffic signals	6		
Pic.32	39,5	traffic signals	6		
Pic.33	40,2	traffic signals	6		
Pic.34	40,6	traffic signals	6		



Pic.35: Road sign on road 35-51.

-Follow the Yenişehir-Bornova road 35-51.

pic. Num.	Kilometer(Km)	Description	height (m)	width (m)	length (m)
Pic.35	40,8	Road sign	6		



Pic.36. Traffic sign on road 35-51



Pic.37: Traffic light on road 35-51



Pic.38: Traffic light on road 35-51

pic. Num.	Kilometer(Km)	Description	height (m)	width (m)	length (m)
Pic.36	41,2	Traffic signals	6		
Pic.37	41,4	Traffic signals	6		
Pic.38	41,8	traffic signals	6		



Pic.39: Footbridge on road 35-51

pic. Num.	Kilometer(Km)	Description	height (m)	width (m)	length (m)
Pic.39	42,3	Footbridge	6		



Pic.40: Road sign and foot bridge

pic. Num.	Kilometer(Km)	Description	height (m)	width (m)	length (m)
Pic.40	43	Road sign	6		
Pic.40	43	Footbridge	6		



Pic.41 : Subway passing under highway on road 35-51

pic. Num.	Kilometer(Km)	Description	height (m)	width (m)	lenght (m)
Pic.41	43,5	Subway passing under highway	5,5		



Pic.42: Footbridge on road 35-51

pic. Num.	Kilometer(Km)	Description	height (m)	width (m)	length (m)
Pic.42	44,9	Footbridge	5.80		



Pic.43: Footbridge on road 35-51

pic. Num.	Kilometer(Km)	Description	height (m)	width (m)	length (m)
Pic.43	46	Footbridge	5.5		

pic.44



Pic.44: Road sign and footbridge on road 35-51

pic. Num.	Kilometer(Km)	Description	height (m)	width (m)	length (m)
Pic.44	47	Road sign and footbridge	6		

pic.45



Pic.45: Move to road 35-51 to access Karşıyaka district



Pic.46: Viaduct crossing. On road 35-51.
 -Lifting capacity of viaduct 600 t

pic. Num.	Kilometer(Km)	Description	height (m)	width (m)	length (m)
Pic.46	49	Viaduct crossing		15	55



Pic.47: Subway under highway bridge on road 35-51

pic. Num.	Kilometer(Km)	Description	height (m)	width (m)	length (m)
Pic.47	49,8	subway under highway bridge.	6,5		



pic.48

Pic.48 : Road sign on road 35-51.
 - Follow the Bornova Manisa
 İstanbul road 35-51

pic. Num.	Kilometer(Km)	Description	height (m)	width (m)	length (m)
Pic.48	49,9	Road sign.	6		



Pic.49: Turn right to accessing Karşıyaka district road number D-550

pic. Num.	Kilometer(Km)	Description	height (m)	width (m)	length (m)
Pic.49	50,3	Turn right to accessing Karşıyaka district			



Pic.50: Subway passing under highway bridge on road D-550

pic. Num.	Kilometer(Km)	Description	height (m)	width (m)	length (m)
Pic.50	50,4	Subway under highway bridge.	7		



Pic.51: Subway under passing highway. Road number D-550

pic. Num.	Kilometer(Km)	Description	height (m)	width (m)	length (m)
Pic.51	50,6	Subway under highway bridge.	6		



Pic.52: Coastal Road D-550

pic. Num.	Kilometer(Km)	Description	height (m)	width (m)	length (m)
Pic.52	52	Coastal road			



Pic.53: Footbridge on road D-550.

pic. Num.	Kilometer(Km)	Description	height (m)	width (m)	length (m)
Pic.53	53	Footbridge	5,8		



Pic.54: Bridge crossing on D-550 road
 - Carriage capacity 600t

pic. Num.	Kilometer(Km)	Description	height (m)	width (m)	length (m)
Pic.54	53,6	Bridge crossing		20	200



Pic.55: Footbridge on D-550 road.

pic. Num.	Kilometer(Km)	Description	height (m)	width (m)	length (m)
Pic.55	54,3	Footbridge	5,5		



Pic.56: Road sign on D-550 road.
 -Follow the Çanakkale road

pic. Num.	Kilometer(Km)	Description	height (m)	width (m)	length (m)
Pic.56	55,4	Karşıyaka road sign	5,5		



Pic.57: Subway passing under highway bridge. Road number D-550

pic. Num.	Kilometer(Km)	Description	height (m)	width (m)	length (m)
Pic.57	56,1	subway under passing highway bridge	6,5		20



Pic.58 : Footbridge on D-550 road

pic. Num.	Kilometer(Km)	Description	height (m)	width (m)	length (m)
Pic.58	56,4	Footbridge	5		



Pic.59 : Footbridge on D-550 road

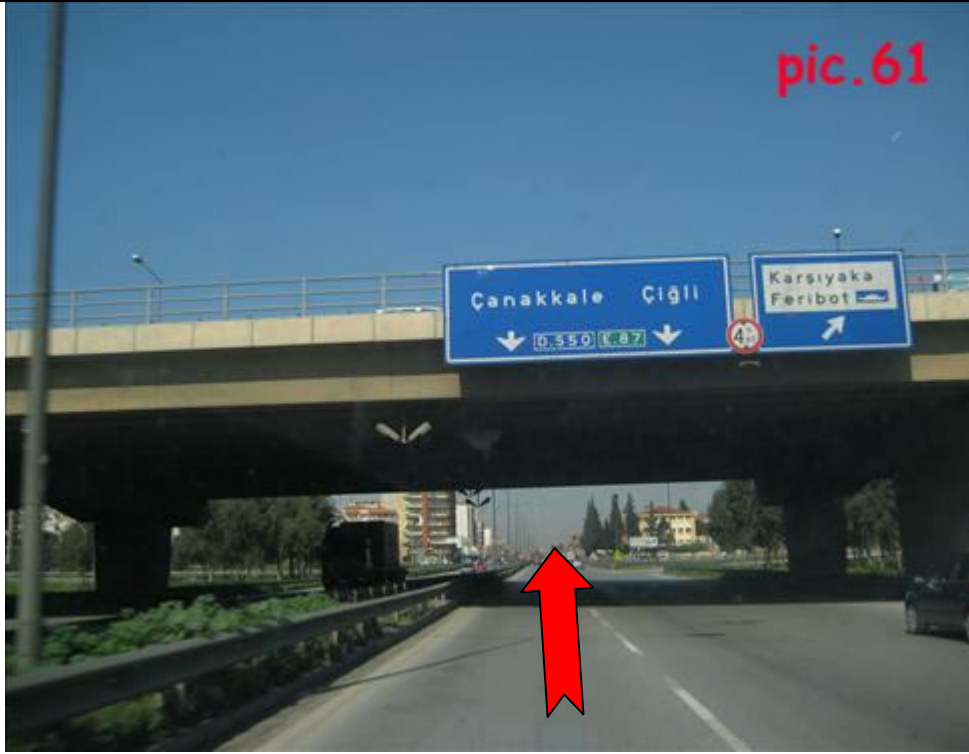
pic. Num.	Kilometer(Km)	Description	height (m)	width (m)	length (m)
Pic:59	56,8	Footbridge	8		



Pic.60: Traffic signal on road D-550

pic. Num.	Kilometer(Km)	Description	height (m)	width (m)	length (m)
Pic.60	57,4	Traffic signals	6		

pic.61



Pic.61 : subway passing under highway bridge on D-550

-Follow the Çanakkale Çiğli road D-550

pic. Num.	Kilometer(Km)	Description	height (m)	width (m)	length (m)
Pic.61	58	Subway under highway bridge	4,8		



Pic.62: Traffic signals on D-550



Pic.63: Traffic signals on D-550



Pic.64: Traffic signals on D-550



Pic.65 : Traffic signals on D-550

pic. Num.	Kilometer(Km)	Description	height (m)	width (m)	length (m)
Pic.62	58,2	Traffic signals.	6		
Pic.63	58,6	Traffic signals.	6		
Pic.64	59	Traffic signals	6		
Pic.65	59,5	Traffic signals	6		

pic.66



Pic.66 Road sign on road D-550
 - Follow the Çanakkale- Çiğli road D-550

pic. Num.	Kilometer(Km)	Description	height (m)	width (m)	length (m)
Pic.66	60,5	Road sign	6		

pic.67



Pic.67 : Turnout on D-550

-Follow the road D-550

pic. Num.	Kilometer(Km)	Description	height (m)	width (m)	length (m)
Pic.67	60,7	Move on Left			



Pic.68: Highway bridge on D-550

pic. Num.	Kilometer(Km)	Description	height (m)	width (m)	length (m)
Pic.68	61,1	Subway under passing highway bridge	5,5		

pic.69



Pic.69 : Road sign on D-550
 -Follow the Menemen- Çanakkale road D-550

pic. Num.	Kilometer(Km)	Description	height (m)	width (m)	length (m)
Pic.69	62,6	Road sign and Footbridge	6		



Pic.70: Bypass road
 Pic.71: Road Junction on bypass way
 Pic.72: Narrow Road on bypass road
 Pic.73 : Traffic signals
 Pic.74 : End of bypass way

-Subway Height is 5 meter.

Both of subway and bypass road can be use for transportation. Which way will be use can be chosen due to road conditions.

pic. Num.	Kilometer(Km)	Description	height (m)	width (m)	length (m)
62,8	Bypass way	Pic.70: Bypass way			
63		Pic.71-72: Narrow Road Road junction on bypass road	5	8	30
63,4		Pic.73: Traffic sign			
63,7		Pic.74: End of bypass way			



Pic.74: Footbridge on D-550

pic. Num.	Kilometer(Km)	Description	height (m)	width (m)	length (m)
Pic.74	64,4	Footbridge	5,5		



Pic.75: Footbridge on D-550

pic. Num.	Kilometer(Km)	Description	height (m)	width (m)	length (m)
Pic.75	64,9	Footbridge	5,5		



Pic.76: Road sign on D-550

pic. Num.	Kilometer(Km)	Description	height (m)	width (m)	length (m)
Pic.76	66,1	Road sign	6		



-Due to our mesearuments reel height (m) is 5 meter.

-There is a bypass road on right site on subway also. Both of subway and bypass road can be use for transportation.

pic. Num.	Kilometer(Km)	Description	height (m)	width (m)	length (m)
	66,6	Bypass road		5	
Pic:77	66,6	Subway	4,8		



Pic.78: Footbridge on D-550

pic. Num.	Kilometer(Km)	Description	height (m)	width (m)	length (m)
Pic:78	71,5	Footbridge	5,5		

pic.79



Pic.79: Traffic signal on D-550



Pic.80: Traffic signal on D-550

pic. Num.	Kilometer(Km)	Description	height (m)	width (m)	length (m)
Pic.79	72,6	Traffic signals	6		
Pic.80	74,1	Traffic signals	6		

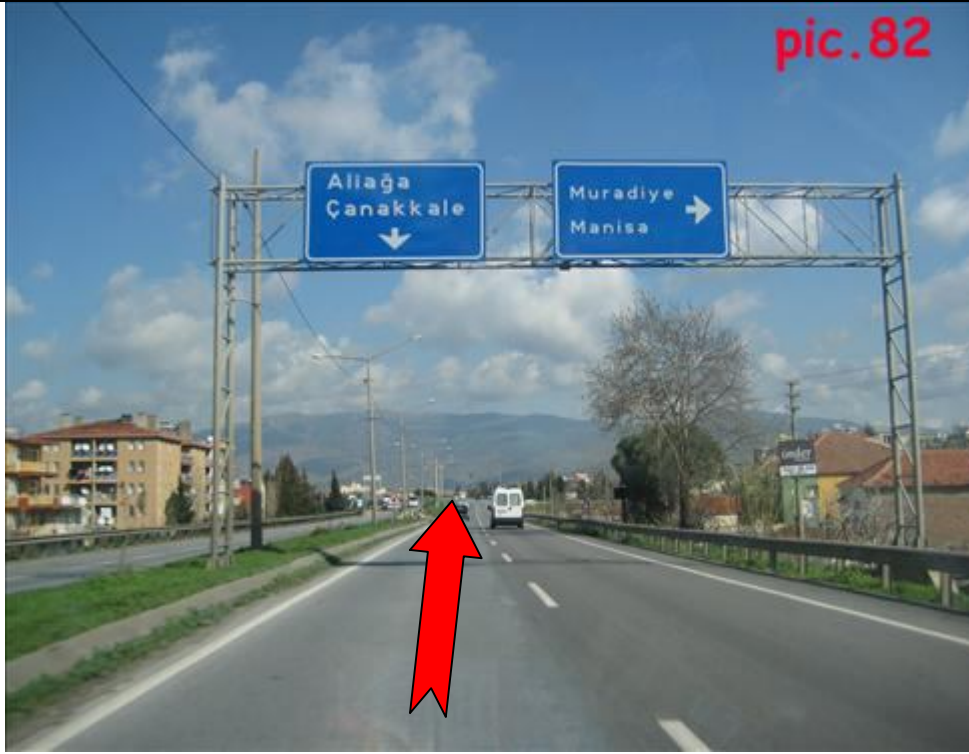


Pic.81: Accessing Menemen District via D-550 road and bridge crossing.

-Capacity of bridge 600 t

pic. Num.	Kilometer(Km)	Description	height (m)	width (m)	length (m)
	76,1	Accessing Menemen District			
Pic.81	76,3	Bridge crossing		10	30

pic.82



Pic.82: Road sign on D-550
 - Follow the Aliğa-Çanakkale road.

pic. Num.	Kilometer(Km)	Description	height (m)	width (m)	length (m)
Pic.82	77,2	Road sign Aliğa Çanakkale	6,5		



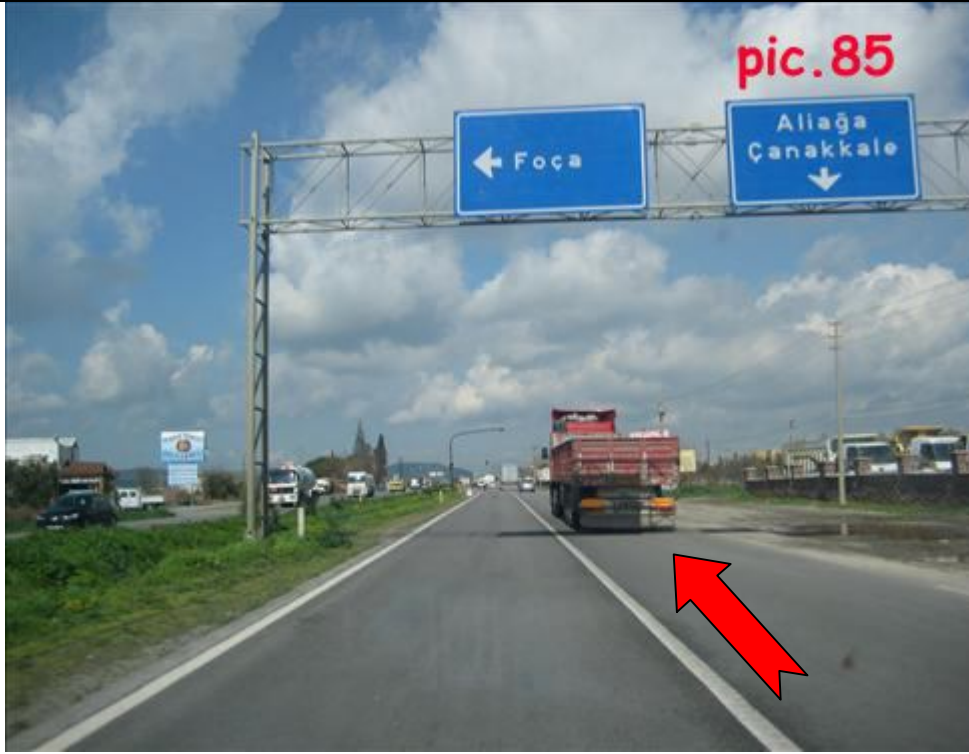
Pic.83: Footbridge on D-550

pic. Num.	Kilometer(Km)	Description	height (m)	width (m)	length (m)
Pic.83	78,2	Footbridge	6		



Pic.84: Traffic signal on D-550

pic. Num.	Kilometer(Km)	Description	height (m)	width (m)	length (m)
Pic.84	78,6	Traffic signal	8		



Pic.85: Road sign on D-550
 -Follow the Aliğa- Çanakkale road D-550

pic. Num.	Kilometer(Km)	Description	height (m)	width (m)	length (m)
Pic.85	80,7	Road signal	5,5		

pic.86



Pic.86: Road sign on D-550
 -Follow the Aliğa- Çanakkale road D-550

pic. Num.	Kilometer(Km)	Description	height (m)	width (m)	length (m)
Pic.86	87,8	Road sign	6		



Pic.87: Traffic signal on D-550

pic. Num.	Kilometer(Km)	Description	height (m)	width (m)	length (m)
Pic.87	88,1	Traffic signal	8		



Pic.88: Traffic signal on D-550

pic. Num.	Kilometer(Km)	Description	height (m)	width (m)	length (m)
Pic.88	95,3	Traffic signal	6,5		



Pic.89: Traffic signal on D-550

pic. Num.	Kilometer(Km)	Description	height (m)	width (m)	length (m)
Pic.88	101	Traffic signal	6		



Pic.90: Traffic signal on D-550

pic. Num.	Kilometer(Km)	Description	height (m)	width (m)	length (m)
Pic.90	104	Traffic signal	5,5		



Pic.91: Traffic signal on D-550

pic. Num.	Kilometer(Km)	Description	height (m)	width (m)	length (m)
Pic.91	113	Traffic signal	5,5		



Pic.92: Traffic signal on D-550

pic. Num.	Kilometer(Km)	Description	height (m)	width (m)	length (m)
Pic.92	121	Traffic signal	6		



Pic.93: Traffic signal on D-550

pic. Num.	Kilometer(Km)	Description	height (m)	width (m)	length (m)
Pic.93	127	Traffic signal	7		



Pic.94: Traffic signal on D-550

pic. Num.	Kilometer(Km)	Description	height (m)	width (m)	length (m)
Pic.94	133	Traffic signal	7,5		



pic.96

Pic.96: Bergama road sign on D-550

pic. Num.	Kilometer(Km)	Description	height (m)	width (m)	length (m)
Pic.96	139	Road sign	5,8	9	



Pic.97: Bergama intersection.
 Turn right to accessing Bergama district and join to road D-240

pic. Num.	Kilometer(Km)	Description	height (m)	width (m)	length (m)
Pic.97	142,9	Bergama intersection			



Pic.98 Traffic signal on D-240



Pic.99:Bergama district



Pic.100: Traffic signal on D-240



Pic.101: Turn right to Akhisar Kırkağaç road D-240

pic. Num.	Kilometer(Km)	Description	height (m)	width (m)	length (m)
Pic.98	143,3	Traffic signals	6		
Pic.99	146,2	Bergama			
Pic.100	147,2	Bergama signals 1			
Pic.101	148,1	Traffic lights and turn to right			

pic.102



Pic.102: Traffic signal on D-240

pic.103



Pic.103 : Traffic signal on D-240



ic.104: Traffic signal on D-240
 - Follow the road continuously

pic. Num.	Kilometer(Km)	Description	height (m)	width (m)	length (m)
Pic.102	148,6	Traffic signal			
Pic.103	149,1	Traffic signal	6		
Pic.104	149,8	Traffic signal			



Pic.105: Bridge crossing
-Bridge capacity 550t



Pic.106: Narrow road on road D-240.

-Busy and narrow road on D-240

pic. Num.	Kilometer(Km)	Description	height (m)	width (m)	length (m)
Pic.105	150,4	Bridge crossing	10		
Pic.106	150,4	Narrow road since bridge crossing	10		



Pic.107: bridge crossing
 -Capacity of bridge 500t

pic. Num.	Kilometer(Km)	Description	height (m)	width (m)	length (m)
Pic.107	151,1	Bridge crossing		10	



Pic.109: Bridge crossing

- Narrow road on bridge
- Capacity 550t

pic. Num.	Kilometer(Km)	Description	height (m)	width (m)	length (m)
Pic.109	176,5	bridge crossing		8	20



Pic.110: Road construction
 -Width of road: 4,5 m

pic. Num.	Kilometer(Km)	Description	height (m)	width (m)	length (m)
Pic.110	184	Road construction			



Pic.111:Soma District

pic. Num.	Kilometer(Km)	Description	height (m)	width (m)	length (m)
Pic.111	186	Soma			



Pic.112: Traffic signals on soma district.

pic. Num.	Kilometer(Km)	Description	height (m)	width (m)	length (m)
Pic.112	190,3	Traffic signals	7		



Pic.113: Traffic signals.

-Follow the right road to accesing
 ----- Site

pic. Num.	Kilometer(Km)	Description	height (m)	width (m)	length (m)
Pic.113	191,3	Traffic signals	7		



Pic.114: Traffic signals.
 -Follow the road.

pic. Num.	Kilometer(Km)	Description	height (m)	width (m)	length (m)
Pic.114	191,6	Traffic signals			



Pic.115: Traffic Signal

pic. Num.	Kilometer(Km)	Description	height (m)	width (m)	length (m)
Pic.115	191,9	Trafik signals	8		



Pic.116: Accessing site area end of road D-240

pic. Num.	Kilometer(Km)	Description	height (m)	width (m)	length (m)
Pic.116	193,3	Turn left			



Pic.117: Energy plant next to left to Accessing site area narrow road starts

pic. Num.	Kilometer(Km)	Description	height (m)	width (m)	length (m)
Pic.117	193,3	Pic.117 : Narrow road	7		



Pic.118: Two conveyor line.

pic. Num.	Kilometer(Km)	Description	height (m)	width (m)	length (m)
Pic.118	195,7	Twice conveyor line upper the road level	6m		



Pic.119: Yırca town follow the road on left .

pic. Num.	Kilometer(Km)	Description	height (m)	width (m)	length (m)
Pic.119	197,6	Yırca town and turn let			



Pic.120: Tekeli Işıklar town.
 -Turn right to accessing site.
 -Narrow Road:4,5m

pic. Num.	Kilometer(Km)	Description	height (m)	width (m)	length (m)
Pic.120	204,8	Turn right to accessing construction site			



Pic.121 : Dirt and narrow road

pic. Num.	Kilometer(Km)	Description	height (m)	width (m)	length (m)
Pic.121	204,8	Dirt and narrow road		4,5	



Pic.122 : Slope , dirt and narrow road.

pic. Num.	Kilometer(Km)	Description	height (m)	width (m)	length (m)
Pic.122	209,8	Slope road		4	



Pic.123: Narrow ,dirt damaged road.
 -Begining of forest

pic. Num.	Kilometer(Km)	Description	height (m)	width (m)	lenght (m)
Pic.123	212,4	Accesing the forrest		4,5	



Pic.124: Dirt road.
 -End of forest

pic. Num.	Kilometer(Km)	Description	height (m)	width (m)	length (m)
Pic.124	213,3	Dirt road.		7	



Pic.125 : Accesing the ----- site with folowing dirt road.

pic. Num.	Kilometer(Km)	Description	height (m)	width (m)	lenght (m)
Pic.125	216,6	Accesing the construction site		8	



Pic.126-127-128-129: Storage area.

pic. Num.	Kilometer(Km)	Description	height (m)	width (m)	length (m)
Pic.126 ,127,128, 129	216,9	storage area			

3. RESULTS

- Main route and alternative route are suitable for transportation of concrete tower sections.
- Main route and alternative route are allowed by laws for concrete tower transportation.
- Sometimes, transportation road will be chosen according to traffic situation on route.
- Transportation permits is taken easily for Main route and alternative route.
- Sometimes, concrete tower transportation can be done at night according to order of laws.
- Total distance from Arkas factory to Storage area at ----- Site is 216,9 Kilometer(Km)
- Concrete towers can be stored on mentioned storage area, if it is allowed.